



# SWEET MEMORIES

13th January - 16th February  
2024

**MONTI8**  
[www.monti8.com](http://www.monti8.com)

Tae Lee

Hanna Brody

Monika Marchewka

Johan Larnouhet

Florent Groc



**TAE LEE**





Plant the seeds, nurture them, water them, and without fail  
a garden grows, 2023

*acrylic on canvas*

cm 71×61

MONTI8



**Overflowing torrential warm intentions gushing from rain-cloud hearts  
flood planetary systems turning outer space into an ocean, 2023**

*acrylic on canvas*

cm 76×61

MONTI8



An abstract painting featuring a palette of warm, earthy colors including ochre, terracotta, and muted reds, set against a light, off-white background. The composition is characterized by broad, expressive brushstrokes and visible texture, suggesting a gestural and somewhat somber mood. The colors are layered and blended, with some darker, more saturated areas contrasting with the lighter, more washed-out sections. The overall effect is one of organic, textured complexity.

**HANNA BRODY**





**Under Construction, 2023**

*Oil and dye on canvas*

cm 122×112

MONTI8



**MONIKA MARCHEWKA**





**Almost There, 2023**

*Oil on canvas*

cm 70×70

MONTI8



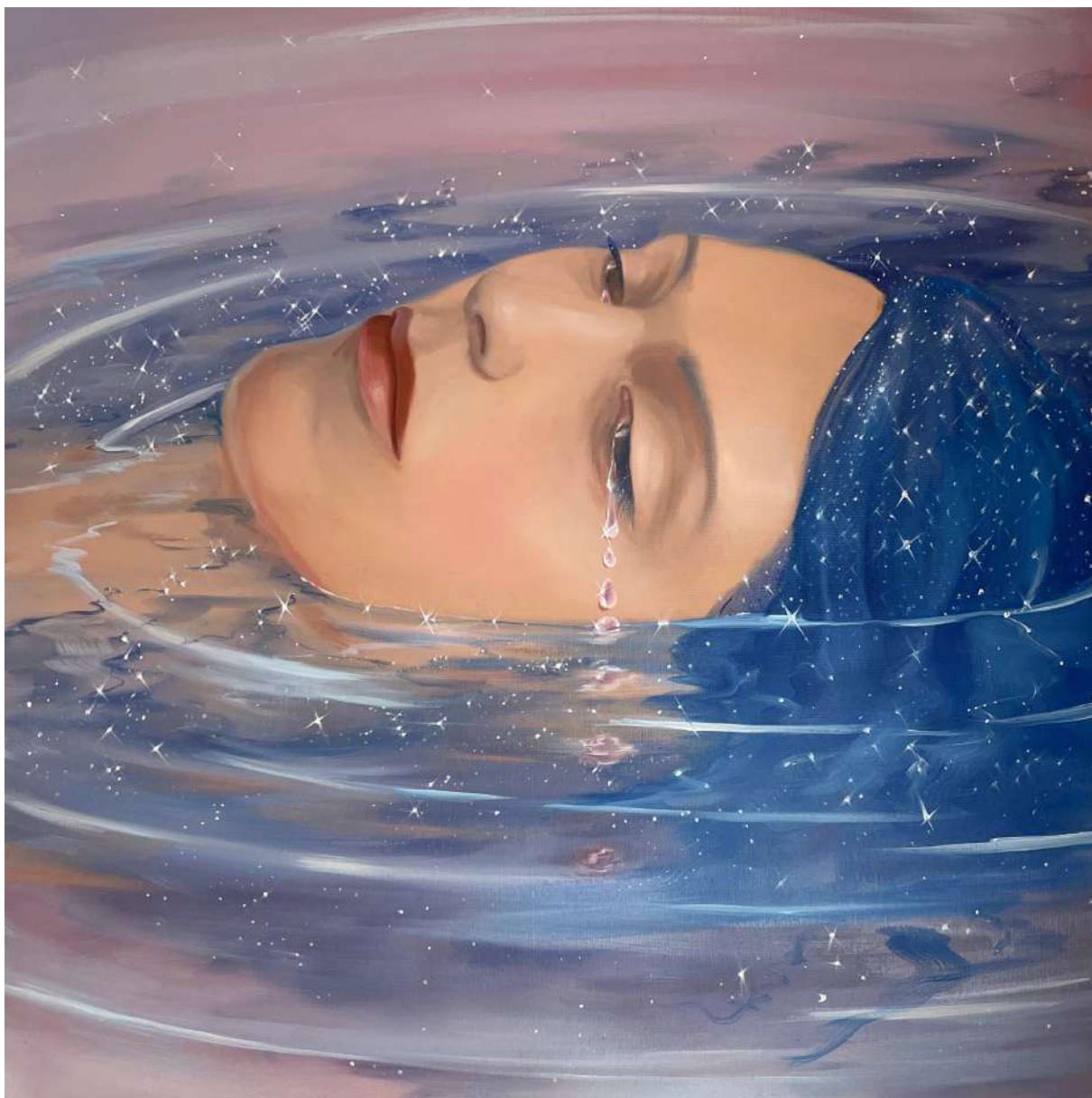
**Mirror, 2023**

*Oil on canvas*

cm 100×90

MONTI8





**Pearls, 2023**

*Oil on canvas*

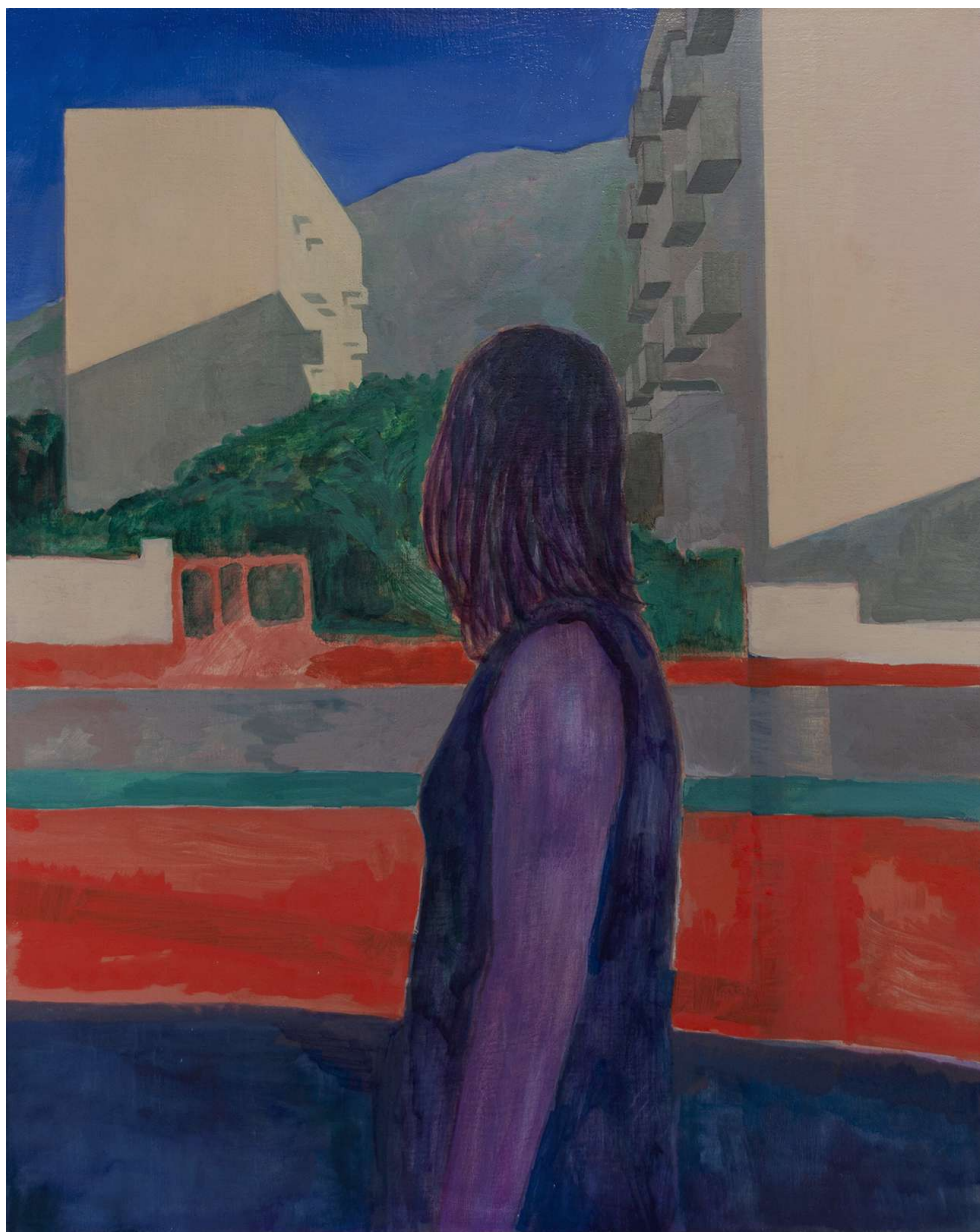
cm 70×70

MONTI8

An abstract painting featuring a large, vibrant red section in the upper half and a dark blue section in the lower half. The colors are applied with visible brushstrokes, creating a textured, layered effect. The red section has some darker, almost black, areas, and the blue section has some lighter, almost white, areas. The overall composition is simple and bold.

**JOHAN LARNOUHET**





**Engalière, 2020**

*Oil on canvas*

cm 100×80

MONTI8

The background of the image is a heavily blurred photograph of a car wheel. The wheel is primarily red, with a blue section visible at the top. The motion blur is horizontal, suggesting the car is moving quickly. The text 'FLORENT GROC' is overlaid on the right side of the image.

**FLORENT GROC**





**Derriere la Faineant. Huile sur Toile, 2023**

*Oil on canvas*

cm 61×50

MONTI8



**Les Cabrioles, Huile sur Toile, 2023**

*Oil on canvas*

cm 61×50

MONTI8

*It would be good to give much thought, before  
you try to find words for something so lost,  
for those long childhood afternoons you knew  
that vanished so completely –and why?*

*From Childhood  
Reiner Maria Rilke  
1902*

**MONTI8** is delighted to present **Sweet Memories**, a group show featuring five artists exhibiting at the gallery for the first time: Hanna Brody, Monika Marchewka, Tae Lee, Johan Larnouhet and Florent Groc.

*The artists are invited to think about dreams and memories from their childhood.*

*The exhibition will open on January 13th and will be on view through February 16th.*

**Hanna Brody** (1994, New York, lives and works in New York) focuses on the people of her life. For her, painting is a way to get close to those people, recreating moments they and her have spent together, like in the painting *Under Construction* that portrays her two best friends from childhood. Brody captures the emotions of those special moments suggesting feelings such as connection, nostalgia, tenderness and intimacy.

For **Monika Marchewka** (1988, Poland, lives and works in Gdynia - Poland) to paint means narrating a story. She composes mysterious scenes with hidden meanings the viewer must unfold, trying to decode the surreal and enigmatic language she always adopts. The unreal and imaginary world she describes, along with the recurring use

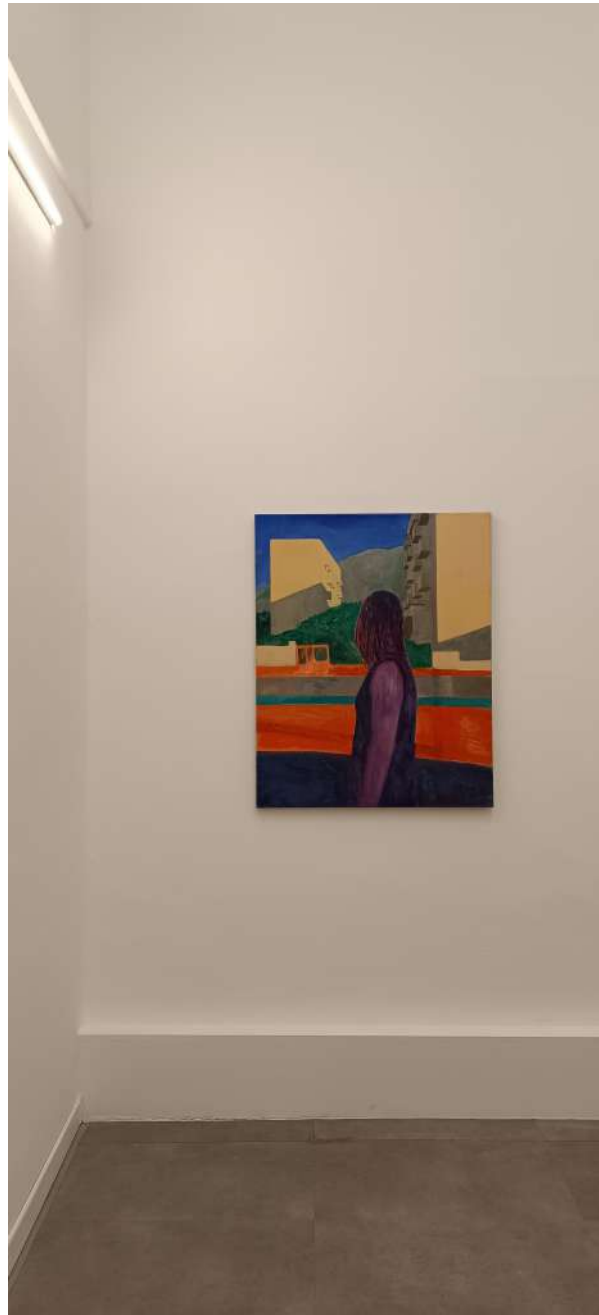


*of pink as the prevalent color, can recall at childhood dreams.*

*The work of **Tae Lee** (Korea, lives and works in Los Angeles) brings the viewer into another dimension, where there is no certain time or space. Using soft and soothing colors - as well as intense - its subjects seem to be part of a fantastic world, like fairy tales or myths, all imbued with a deep sense of peace. The artist incorporates elements from his surroundings that intermingles with his inner self, where animals, human figures and nature are described with the creativity of a child.*

*In the survey of **Johan Larnouhet** (1988, Marseille, lives and works in Paris) people and environment have the same importance. A strong palette is combined with the stillness of the human figures, caught in everyday moments in urban landscapes. "Engalière", the work featured in this show, is a painting representing the neighborhood where he was born and raised. In his small portraits, Larnouhet underlines this stillness by painting faces that never show any emotion, drawing inspiration from the Flemish artists.*

***Florent Groc** (1987, Marseille, lives and works in Marseille) reflects on the landscapes of his childhood, representing colorful and vivid paths, mountains, lakes, where a wild nature doesn't allow any man or woman. The artist paints these familiar mountains with warm tones, soft shapes, and lush vegetation, as to convey the same feeling of intimacy to the observer.*



# SWEET MEMORIES



*Opening:*  
*13th January*  
*Through 16th February*  
*2024*

**Gallery space**

*Via V. Monti 8, Latina (IT)*

**MONTI8**

info@monti8.com

www.monti8.com